



PROGRAM FOR PUBLIC CONSULTATION
 SCHOOL OF PUBLIC POLICY, UNIVERSITY OF MARYLAND

AMERICANS ON SNAP BENEFITS

- Questionnaire -

Total Sample: 7,445

National Sample: 7,128; Margin of Error: +/- 1.2%

State Samples:

Texas (TX): 398; Margin of Error: +/- 4.9%

Florida (FL): 423; Margin of Error: +/- 4.8%

Virginia (VA): 463; Margin of Error: +/- 4.6%

Maryland (MD): 486; Margin of Error: +/- 4.4%

North Carolina (NC): 402; Margin of Error: +/- 4.9%

Ohio (OH): 509; Margin of Error: +/- 4.3%

California (CA): 682; Margin of Error: +/- 3.8%

New York (NY): 401; Margin of Error: +/- 4.9%

Field Dates:

Fielded by Nielsen-Scarborough: November 11, 2016 – December 10, 2016

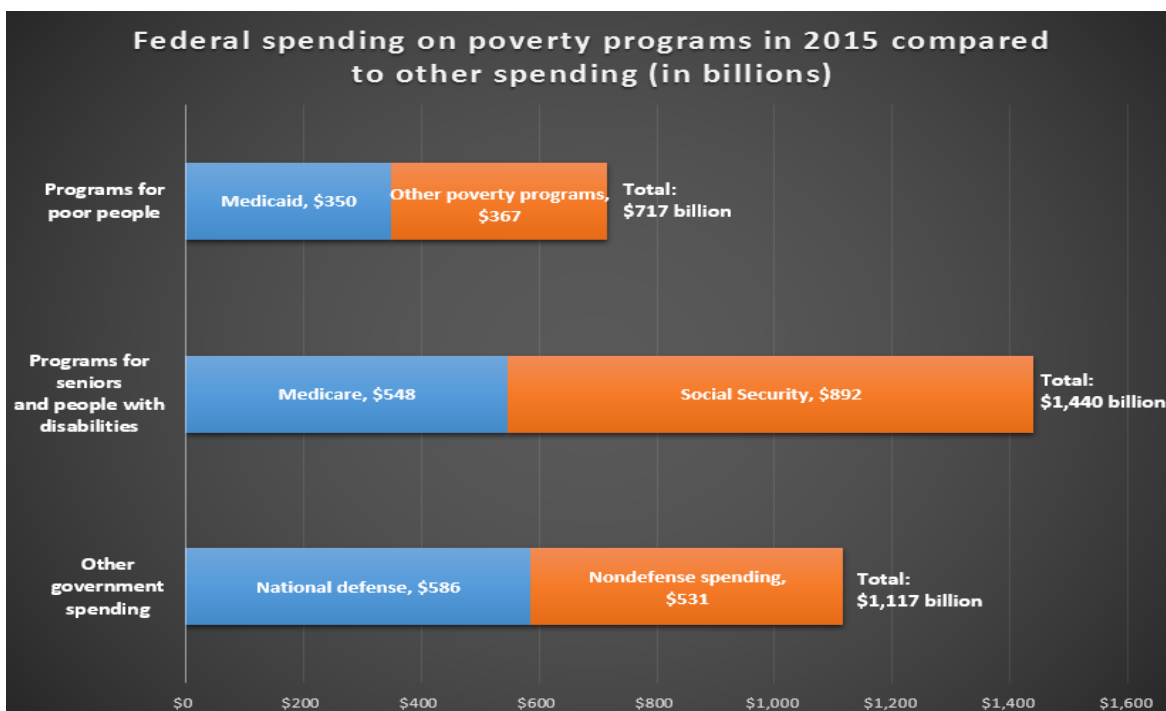
Fielded by Communications for Research, Inc. (CFR): December 13, 2016 – January 18, 2017

Weighting: The sample was subsequently weighted by age, income, gender, education, race, and in the case of the national sample by geographic region. Benchmarks for weights were obtained from the Census’ 2014 Current Populations Survey of Registered Voters. Some state samples were also weighted by Party identification, where available, using the States’ political affiliation statistics from their department of elections for registered voters.

Q1a. – Q4. [Withheld for future release]

Federal Poverty Programs

Let us turn now to how much the federal government spends to help people in or near poverty. The graph also shows how this compares to other types of spending.



Now, we'll look at some major Federal programs and proposed legislation for addressing poverty.

First, we'll look at the programs that aim to reduce the negative effects of poverty by helping poor people (both working and non-working) meet their basic needs. These include:

- Food stamps
- Access to housing
- Medicaid

Later, we'll explore programs for helping the working poor and options for increasing the availability of jobs. For each proposal, you will be presented at least one argument in favor of the proposal and at least one argument against the proposal. You will also be asked how convincing or unconvincing you find each argument before assessing each proposal.

One of the largest poverty programs helps people in low-income households purchase food. It's called the Supplemental Nutrition Assistance Program, or SNAP--more commonly known as 'food stamps.' Recipients now get a card, similar to a debit card, which allows them to buy food at specific grocery/retail stores only up to a certain limit.

In 2015, the program cost \$74 billion, with 23 million households receiving benefits, including about 26 million adults and 20 million children.

To become eligible for SNAP benefits, the federal government has established several guidelines (though some states provide additional SNAP benefits).

The Federal guidelines for each household are:

- **Total household income:** Must be no more than 30% above the federal poverty line.
- **Total household savings:** Must be less than \$2,250. In fact, the average recipient has \$400 in savings.
- **Work requirements:** Able-bodied adults must register with a state employment office, actively seek work and/or job training, and accept a job, if offered.

Benefits vary on a sliding scale depending on household income. As income goes up, benefits go down, and then stop entirely when income is 30% above the poverty line.

Here are some examples of average SNAP benefits:

- About half of all SNAP recipients are living alone. Their average monthly income is \$542. Their SNAP benefit is, on average, about \$140 a month.
- Another major group of SNAP recipients are single mothers with one child. Their average income is approximately \$760 a month. Their SNAP benefit is, on average, \$253 a month.

Q5. How do these levels of benefits seem to you? Do they seem:

Very low	Somewhat low	About right	Somewhat high	Very high
1	2	3	4	5

	Very low	Somewhat low	About right	Somewhat high	Very high	Refused/ Don't know
National	18.9%	38.5%	29.9%	9.6%	2.7%	0.5%
 GOP	8.7%	31.5%	40.9%	14.6%	4.0%	0.4%
 Dem.	27.1%	44.6%	21.8%	4.8%	1.3%	0.4%
 Indep.	21.8%	39.1%	25.2%	9.9%	3.1%	0.8%
Texas	18.4%	35.7%	37.2%	4.4%	3.7%	0.5%
 GOP	9.8%	27.9%	52.3%	5.9%	3.9%	0.3%
 Dem.	25.2%	41.7%	25.4%	3.5%	4.2%	0.0%
North Carolina	21.4%	37.5%	25.1%	11.8%	3.7%	0.6%
 GOP	10.7%	34.4%	34.6%	13.1%	7.2%	0.0%
 Dem.	28.7%	43.7%	20.3%	5.4%	1.0%	0.8%
Florida	20.6%	39.1%	27.1%	10.8%	2.2%	0.2%
 GOP	8.6%	34.0%	40.3%	14.0%	2.5%	0.6%
 Dem.	26.5%	46.2%	19.7%	5.3%	2.2%	0.0%
Ohio	17.4%	39.1%	29.6%	11.2%	2.5%	0.1%
 GOP	9.9%	32.0%	42.1%	12.3%	3.8%	0.0%
 Dem.	26.0%	45.6%	20.4%	7.5%	0.2%	0.2%
Virginia	18.9%	36.9%	32.8%	7.9%	2.7%	0.9%
 GOP	8.2%	21.0%	48.8%	14.8%	4.8%	2.4%
 Dem.	25.4%	47.3%	23.6%	3.6%	0.0%	0.0%
California	21.7%	42.2%	26.3%	6.8%	2.6%	0.4%
 GOP	8.5%	34.0%	39.8%	11.5%	6.2%	0.0%
 Dem.	29.4%	47.0%	17.9%	5.1%	0.6%	0.0%
Maryland	23.4%	35.7%	30.0%	8.9%	1.2%	0.7%
 GOP	7.5%	29.4%	47.6%	12.1%	2.4%	1.0%
 Dem.	31.0%	39.9%	24.0%	4.2%	0.4%	0.4%
New York	22.3%	41.5%	25.9%	7.5%	2.2%	0.6%
 GOP	11.1%	36.7%	32.5%	16.2%	3.4%	0.0%
 Dem.	24.5%	46.6%	22.8%	3.1%	1.9%	1.1%

Here is an argument in favor of raising benefits

Q6. The average person who receives food stamps makes only \$542 a month. For them to get \$140 a month for food stamps is simply not enough—this is less than \$5 a day. Many want to earn more, but can't find a job or a better paying job. Food is a basic human need and it is simply wrong to keep people on the edge of hunger with benefits so low.

How convincing or unconvincing do you find this argument.

Very convincing	Somewhat convincing	Somewhat unconvincing	Very unconvincing
1	2	3	4

	Very convincing	Somewhat convincing	Total convincing	Somewhat unconvincing	Very unconvincing	Total unconvincing	Refused / Don't know
National	34.1%	37.7%	71.8%	17.5%	10.3%	27.8%	0.4%
 GOP	17.1%	40.6%	57.7%	26.8%	15.3%	42.1%	0.3%
Dem.	50.1%	35.2%	85.3%	9.2%	5.3%	14.5%	0.3%
Indep.	33.0%	37.7%	70.7%	17.1%	11.3%	28.4%	0.9%
Texas	34.3%	35.2%	69.5%	21.3%	9.2%	30.5%	0.0%
 GOP	17.3%	38.8%	56.1%	31.7%	12.2%	43.9%	0.0%
Dem.	49.1%	33.7%	82.8%	11.8%	5.4%	17.2%	0.0%
North Carolina	41.3%	30.5%	71.8%	17.3%	10.9%	28.2%	0.0%
 GOP	24.0%	34.1%	58.1%	24.8%	17.1%	41.9%	0.0%
Dem.	54.4%	34.6%	89.0%	8.2%	2.7%	10.9%	0.0%
Florida	33.3%	40.3%	73.6%	14.2%	11.8%	26.0%	0.3%
 GOP	21.5%	42.0%	63.5%	20.7%	15.6%	36.3%	0.2%
Dem.	44.8%	39.8%	84.6%	10.7%	4.0%	14.7%	0.7%
Ohio	34.1%	41.5%	75.6%	14.3%	10.1%	24.4%	0.0%
 GOP	20.4%	43.4%	63.8%	20.5%	15.7%	36.2%	0.0%
Dem.	50.3%	39.1%	89.4%	6.3%	4.3%	10.6%	0.0%
Virginia	35.9%	41.0%	76.9%	11.5%	11.6%	23.1%	0.0%
 GOP	13.6%	45.8%	59.4%	20.4%	20.2%	40.6%	0.0%
Dem.	53.9%	37.0%	90.9%	5.6%	3.5%	9.1%	0.0%
California	34.4%	39.1%	73.5%	14.4%	11.9%	26.3%	0.2%
 GOP	11.8%	42.5%	54.3%	22.8%	22.4%	45.2%	0.6%
Dem.	48.3%	36.7%	85.0%	7.5%	7.6%	15.1%	0.0%
Maryland	39.4%	33.7%	73.1%	18.8%	7.5%	26.3%	0.6%
 GOP	13.9%	42.8%	56.7%	33.9%	9.4%	43.3%	0.0%
Dem.	56.3%	31.0%	87.3%	9.7%	3.0%	12.7%	0.0%
New York	41.9%	33.0%	74.9%	17.9%	7.1%	25.0%	0.0%
 GOP	26.4%	31.3%	57.7%	27.8%	14.5%	42.3%	0.0%
Dem.	48.2%	37.2%	85.4%	9.1%	5.5%	14.6%	0.0%

Here is an argument against raising benefits

Q7. The amount we spend on SNAP is a lot of money--\$74 billion dollars. We should not increase it. The economy is better now and there are more jobs out there. We need to encourage people to get out there and try harder in this improving labor market. We shouldn't make it easier for them not to make the effort.

How convincing or unconvincing do you find this argument?

Very convincing	Somewhat convincing	Somewhat unconvincing	Very unconvincing
1	2	3	4

	Very convincing	Somewhat convincing	Total convincing	Somewhat unconvincing	Very unconvincing	Total unconvincing	Refused / Don't know
National	18.4%	33.8%	52.2%	25.7%	21.8%	47.5%	0.2%
GOP	27.8%	41.9%	69.7%	19.5%	10.5%	30.0%	0.4%
Dem.	10.5%	27.6%	38.1%	30.2%	31.7%	61.9%	0.1%
Indep.	16.7%	30.9%	47.6%	28.8%	23.3%	52.1%	0.3%
Texas	22.3%	31.5%	53.8%	24.6%	21.6%	46.2%	0.0%
GOP	34.8%	40.4%	75.2%	18.5%	6.3%	24.8%	0.0%
Dem.	15.7%	23.3%	39.0%	28.1%	32.9%	61.0%	0.0%
North Carolina	23.1%	28.7%	51.8%	27.8%	20.1%	47.9%	0.2%
GOP	35.2%	36.7%	71.9%	20.5%	7.6%	28.1%	0.0%
Dem.	12.1%	22.9%	35.0%	37.0%	28.0%	65.0%	0.0%
Florida	16.4%	34.6%	51.0%	26.1%	22.4%	48.5%	0.5%
GOP	27.4%	40.3%	67.7%	20.0%	11.0%	31.0%	1.4%
Dem.	6.7%	35.0%	41.7%	30.8%	27.4%	58.2%	0.0%
Ohio	19.3%	38.6%	57.9%	25.2%	16.8%	42.0%	0.1%
GOP	25.1%	48.1%	73.2%	18.6%	8.0%	26.6%	0.2%
Dem.	12.6%	28.6%	41.2%	32.5%	26.1%	58.6%	0.1%
Virginia	15.1%	32.8%	47.9%	26.4%	25.4%	51.8%	0.4%
GOP	24.3%	43.2%	67.5%	23.8%	8.7%	32.5%	0.0%
Dem.	7.1%	27.0%	34.1%	29.4%	35.7%	65.1%	0.8%
California	14.7%	36.8%	51.5%	24.4%	24.0%	48.4%	0.1%
GOP	27.2%	46.9%	74.1%	17.4%	8.3%	25.7%	0.3%
Dem.	8.1%	29.8%	37.9%	25.8%	36.3%	62.1%	0.0%
Maryland	14.5%	27.8%	42.3%	28.1%	29.5%	57.6%	0.2%
GOP	25.0%	45.6%	70.6%	19.9%	9.4%	29.3%	0.0%
Dem.	11.3%	18.2%	29.5%	29.7%	40.4%	70.1%	0.3%

New York	12.2%	29.1%	41.3%	28.8%	29.8%	58.6%	0.1%
GOP	25.1%	41.2%	66.3%	18.6%	14.9%	33.5%	0.3%
Dem.	7.0%	24.2%	31.2%	33.7%	35.1%	68.8%	0.0%

Now, we would like to know what you think average monthly SNAP benefits should be.

Q8. For recipients living alone and earning on average \$542 a month, current SNAP benefits are about \$140.

What do you think this amount should be? \$ _____

	Median	Lowered	Kept the same	Raised	Refused / Don't know
National	200.0	11.2%	8.3%	80.5%	0.0%
GOP	175.0	19.0%	15.0%	66.0%	0.0%
Dem.	210.0	3.7%	3.4%	92.9%	0.0%
Indep.	200.0	12.2%	5.7%	82.1%	0.0%
Texas	200.0	10.4%	9.1%	79.4%	1.1%
GOP	180.0	16.2%	16.9%	64.5%	2.3%
Dem.	214.6	4.8%	4.3%	90.9%	0.0%
North Carolina	200.0	7.8%	10.2%	79.9%	2.2%
GOP	188.1	16.7%	14.5%	66.1%	2.6%
Dem.	215.9	2.5%	4.4%	90.8%	2.4%
Florida	200.0	9.9%	7.8%	79.1%	3.1%
GOP	200.0	16.7%	14.9%	63.9%	4.5%
Dem.	200.0	2.9%	5.0%	89.4%	2.6%
Ohio	200.0	11.5%	8.0%	78.4%	2.1%
GOP	180.0	18.2%	14.0%	65.9%	1.9%
Dem.	220.0	2.4%	3.1%	92.2%	2.3%
Virginia	200.0	12.9%	10.9%	74.2%	1.9%
GOP	150.0	23.1%	20.1%	53.1%	3.8%
Dem.	200.0	5.3%	2.2%	91.5%	1.1%
California	200.0	9.1%	7.2%	78.7%	5.1%
GOP	175.0	17.8%	13.6%	62.9%	5.7%
Dem.	222.1	3.7%	6.3%	87.1%	3.0%
Maryland	200.0	10.3%	6.7%	81.8%	1.3%
GOP	160.0	18.5%	15.6%	62.8%	3.2%
Dem.	225.0	4.4%	3.5%	91.5%	0.6%

New York	200.0	8.5%	4.8%	84.3%	2.4%
GOP	182.8	17.0%	12.2%	65.8%	5.0%
Dem.	200.0	2.9%	0.0%	94.6%	2.5%

Q9. For a single mother with one child and earning on average \$760 a month, current SNAP benefits are about \$253.

What do you think this amount should be? \$ _____

	Median	Lowered	Kept the same	Raised	Refused / Don't know
National	300.0	14.7%	7.8%	77.5%	0.0%
GOP	287.0	24.4%	13.2%	62.4%	0.0%
Dem.	350.0	5.8%	3.3%	90.9%	0.0%
Indep.	300.0	14.9%	6.6%	78.5%	0.0%
Texas	300.0	12.3%	9.9%	75.9%	1.9%
GOP	300.0	19.7%	16.3%	60.0%	4.0%
Dem.	350.0	6.7%	4.7%	88.7%	0.0%
North Carolina	325.0	14.3%	7.4%	75.6%	2.7%
GOP	300.0	22.7%	10.1%	64.6%	2.6%
Dem.	350.0	4.2%	4.6%	87.7%	3.5%
Florida	325.0	14.7%	6.6%	75.2%	3.5%
GOP	300.0	22.2%	12.5%	61.9%	3.4%
Dem.	350.0	6.8%	2.7%	89.3%	1.2%
Ohio	300.0	14.1%	6.6%	76.9%	2.4%
GOP	300.0	22.1%	12.5%	63.5%	1.9%
Dem.	350.0	4.9%	1.2%	90.7%	3.1%
Virginia	300.0	15.4%	8.1%	75.1%	1.4%
GOP	275.0	28.1%	14.2%	54.8%	2.9%
Dem.	350.0	4.6%	3.0%	91.9%	0.5%
California	320.0	10.3%	7.0%	79.0%	3.6%
GOP	300.0	22.1%	13.8%	59.4%	4.7%
Dem.	350.0	4.0%	5.0%	89.4%	1.6%
Maryland	300.0	12.1%	7.0%	79.6%	1.4%
GOP	275.0	22.6%	11.8%	63.5%	2.1%
Dem.	350.0	5.2%	4.9%	89.0%	0.9%

New York	325.0	10.5%	3.6%	82.1%	3.8%
 GOP	300.0	23.0%	9.3%	62.3%	5.4%
 Dem.	350.0	2.9%	0.2%	93.8%	3.2%

[Proposal: Remove asset limits]

Currently for people to be eligible for SNAP, their household savings should be under \$2,250. There is debate about whether this limit should remain \$2,250, be raised to a higher level, or eliminated.

Please evaluate this argument in favor of preserving the current limit

Q10. We should ensure that people receiving government assistance are truly in need. Taxpayer dollars should only help people who have exhausted all other means. If someone loses their job but has substantial money in the bank, they should not qualify for SNAP. They should be expected to use those savings until they are below \$2,250. It is not the government’s responsibility to ensure that people can maintain their bank accounts. Many working people don’t have \$2,250 in the bank.

Very convincing	Somewhat convincing	Somewhat unconvincing	Very unconvincing
1	2	3	4

	Very convincing	Somewhat convincing	Total convincing	Somewhat unconvincing	Very unconvincing	Total unconvincing	Refused / Don't know
National	31.2%	34.7%	65.9%	19.3%	13.5%	32.8%	1.3%
 GOP	39.5%	32.4%	71.9%	18.9%	7.7%	26.6%	1.6%
 Dem.	26.0%	37.2%	63.2%	18.4%	17.4%	35.8%	1.0%
 Indep.	24.7%	33.6%	58.3%	22.8%	17.4%	40.2%	1.5%
Texas	32.8%	22.4%	55.2%	25.8%	19.0%	44.8%	0.0%
 GOP	33.9%	24.1%	58.0%	24.9%	17.1%	42.0%	0.0%
 Dem.	37.4%	21.1%	58.5%	25.4%	16.1%	41.5%	0.0%
North Carolina	30.6%	35.8%	66.4%	23.9%	8.7%	32.6%	1.0%
 GOP	41.9%	19.9%	61.8%	19.6%	15.0%	34.6%	3.6%
 Dem.	28.5%	38.3%	66.8%	25.0%	8.2%	33.2%	0.0%
Florida	29.3%	33.6%	62.9%	23.7%	12.0%	35.7%	1.5%
 GOP	33.2%	41.9%	75.1%	19.1%	5.7%	24.8%	0.0%
 Dem.	25.9%	29.9%	55.8%	23.6%	17.2%	40.8%	3.5%
Ohio	27.0%	42.7%	69.7%	15.5%	14.7%	30.2%	0.2%
 GOP	34.4%	48.1%	82.5%	5.9%	11.2%	17.1%	0.5%
 Dem.	19.8%	40.3%	60.1%	20.3%	19.7%	40.0%	0.0%
Virginia	36.7%	40.2%	76.9%	12.7%	10.5%	23.2%	0.0%
 GOP	61.0%	25.7%	86.7%	5.1%	8.2%	13.3%	0.0%
 Dem.	15.5%	49.3%	64.8%	21.4%	13.9%	35.3%	0.0%

California	25.1%	44.7%	69.8%	17.3%	12.7%	30.0%	0.2%
GOP	36.1%	43.7%	79.8%	18.3%	1.9%	20.2%	0.0%
Dem.	20.8%	40.0%	60.8%	17.8%	21.0%	38.8%	0.4%
Maryland	28.5%	35.2%	63.7%	18.4%	17.9%	36.3%	0.0%
GOP	34.4%	43.2%	77.6%	13.2%	9.2%	22.4%	0.0%
Dem.	19.3%	33.6%	52.9%	22.4%	24.7%	47.1%	0.0%
New York	29.9%	32.7%	62.6%	25.3%	12.1%	37.4%	0.0%
GOP	30.5%	36.3%	66.8%	24.9%	8.3%	33.2%	0.0%
Dem.	24.6%	36.5%	61.1%	23.1%	15.8%	38.9%	0.0%

Please evaluate this argument in favor of raising the limit

Q11. There should be a limit on how much savings a SNAP recipient can have, but it should be above \$2,250. To say a parent with children who has a little more than \$2,250 must spend down these savings before getting food stamps is really unfair. If they face an unexpected cost, they could end up broke and maybe homeless. Even poor people deserve to have a month or two's security.

Very convincing	Somewhat convincing	Somewhat unconvincing	Very unconvincing
1	2	3	4

	Very convincing	Somewhat convincing	Total convincing	Somewhat unconvincing	Very unconvincing	Total unconvincing	Refused / Don't know
National	30.2%	38.2%	68.4%	18.2%	12.3%	30.5%	1.1%
GOP	20.8%	37.7%	58.5%	25.4%	15.2%	40.6%	0.9%
Dem.	39.7%	38.8%	78.5%	11.8%	8.4%	20.2%	1.3%
Indep.	28.2%	38.1%	66.3%	17.2%	15.1%	32.3%	1.3%
Texas	24.1%	39.3%	63.4%	16.3%	16.9%	33.2%	3.4%
GOP	21.4%	29.2%	50.6%	22.8%	25.5%	48.3%	1.0%
Dem.	28.4%	45.5%	73.9%	8.8%	10.2%	19.0%	7.0%
North Carolina	27.7%	38.3%	66.0%	21.9%	11.1%	33.0%	1.0%
GOP	12.7%	51.0%	63.7%	21.8%	10.9%	32.7%	3.6%
Dem.	39.0%	28.8%	67.8%	19.8%	12.3%	32.1%	0.0%
Florida	34.7%	32.8%	67.5%	18.9%	13.6%	32.5%	0.0%
GOP	42.0%	21.9%	63.9%	25.5%	10.5%	36.0%	0.0%
Dem.	32.9%	36.3%	69.2%	18.7%	12.1%	30.8%	0.0%
Ohio	26.1%	48.9%	75.0%	18.1%	6.7%	24.8%	0.2%
GOP	23.3%	51.9%	75.2%	15.6%	8.7%	24.3%	0.5%
Dem.	33.3%	47.0%	80.3%	16.5%	3.1%	19.6%	0.0%

Virginia	29.3%	41.1%	70.4%	19.6%	10.1%	29.7%	0.0%
GOP	9.1%	49.7%	58.8%	18.2%	23.1%	41.3%	0.0%
Dem.	47.7%	42.1%	89.8%	10.2%	0.0%	10.2%	0.0%
California	31.1%	47.9%	79.0%	11.3%	9.8%	21.1%	0.0%
GOP	9.0%	48.6%	57.6%	15.3%	27.0%	42.3%	0.0%
Dem.	45.4%	40.4%	85.8%	11.2%	3.0%	14.2%	0.0%
Maryland	36.8%	26.3%	63.1%	27.2%	9.7%	36.9%	0.0%
GOP	19.1%	27.7%	46.8%	38.9%	14.4%	53.3%	0.0%
Dem.	49.0%	26.5%	75.5%	16.3%	8.2%	24.5%	0.0%
New York	37.2%	37.2%	74.4%	12.3%	13.4%	25.7%	0.0%
GOP	35.7%	35.6%	71.3%	11.8%	16.9%	28.7%	0.0%
Dem.	39.4%	37.8%	77.2%	10.4%	12.3%	22.7%	0.0%

Q12. What do you think the government should do about the amount of savings a household can have and still receive SNAP benefits?

A: Keep the current Federal limit requiring less than \$2,250 in savings	B: Raise the Federal limit from the current \$2,250 in savings to a higher level
1	2

	Keep the current Federal limit requiring less than \$2,250 in savings	Raise the Federal limit from the current \$2,250 in savings to a higher level	Refused / Don't know
National	52.5%	46.1%	1.4%
GOP	65.1%	33.5%	1.3%
Dem.	40.2%	58.6%	1.3%
Indep.	53.6%	44.5%	1.9%
Texas	45.3%	54.2%	0.5%
GOP	64.6%	35.4%	0.0%
Dem.	28.4%	71.6%	0.0%
North Carolina	53.3%	42.7%	4.0%
GOP	67.8%	28.6%	3.6%
Dem.	32.5%	61.6%	5.9%
Florida	51.5%	47.2%	1.3%
GOP	62.8%	37.2%	0.0%
Dem.	37.9%	59.0%	3.1%
Ohio	58.8%	40.5%	0.8%
GOP	78.8%	20.7%	0.5%

Dem.	40.4%	58.5%	1.1%
Virginia	52.6%	46.9%	0.5%
GOP	69.7%	30.3%	0.0%
Dem.	35.2%	63.6%	1.2%
California	41.0%	55.3%	3.7%
GOP	66.7%	33.3%	0.0%
Dem.	30.4%	64.9%	4.7%
Maryland	58.5%	41.5%	0.0%
GOP	81.5%	18.5%	0.0%
Dem.	43.9%	56.1%	0.0%
New York	44.2%	54.7%	1.2%
GOP	50.1%	45.9%	4.0%
Dem.	30.7%	69.3%	0.0%

[ASKED IF RESPONDENT ANSWERED ‘RAISE THE FEDERAL LIMIT FROM THE CURRENT \$2,250 IN SAVINGS TO A HIGHER LEVEL’ ON Q12]

Q12a: Please specify what the limit should be. \$_____

	Median
National	4000.0
GOP	4000.0
Dem.	4000.0
Indep.	4250.0
Texas	7058.3
GOP	4595.2
Dem.	6271.2
North Carolina	4327.5
GOP	4081.5
Dem.	4453.3
Florida	4851.6
GOP	7963.9
Dem.	3936.8

	Median
Ohio	5806.1
GOP	4007.5
Dem.	6681.7
Virginia	6930.9
GOP	5954.2
Dem.	8051.0
California	4715.5
GOP	3614.3
Dem.	5322.1
Maryland	6381.1
GOP	6355.1
Dem.	5936.9
New York	4589.2
GOP	6477.6
Dem.	4069.0

[Proposal: Restrict SNAP-eligible foods]

Recently, there has been a debate over whether some kinds of food people can buy with SNAP benefits should be restricted. Currently, SNAP cannot be used for alcoholic beverages, and usually not for hot ready-to-eat food.

One proposal is to extend these limits to other food items with little nutritional value, such as sweetened sodas, candy, cookies, cakes, and ice cream.

Please evaluate this argument in favor of restricting SNAP eligible foods

Q13. Helping needy people meet their nutritional needs is one thing, but taxpayer dollars should not go to purchase junk food with no nutritional value. We should not encourage people to waste money on food that can damage their health. The rise in obesity and diabetes from eating fatty and sugary foods is a serious strain on America's healthcare system.

Very convincing	Somewhat convincing	Somewhat unconvincing	Very unconvincing
1	2	3	4

	Very convincing	Somewhat convincing	Total convincing	Somewhat unconvincing	Very unconvincing	Total unconvincing	Refused / Don't know
National	51.5%	30.9%	82.4%	9.6%	7.6%	17.2%	0.3%
GOP	63.7%	26.8%	90.5%	4.1%	5.3%	9.4%	0.1%
Dem.	40.1%	35.7%	75.8%	15.3%	8.4%	23.7%	0.5%
Indep.	54.6%	27.1%	81.7%	6.9%	11.0%	17.9%	0.4%
Texas	48.1%	33.6%	81.7%	4.9%	13.3%	18.2%	0.0%
GOP	64.3%	27.3%	91.6%	2.7%	5.7%	8.4%	0.0%
Dem.	33.6%	47.5%	81.1%	8.1%	10.9%	19.0%	0.0%
North Carolina	57.4%	26.6%	84.0%	10.5%	5.5%	16.0%	0.0%
GOP	76.2%	17.9%	94.1%	5.1%	0.8%	5.9%	0.0%
Dem.	45.2%	29.8%	75.0%	11.4%	13.5%	24.9%	0.0%
Florida	50.7%	24.3%	75.0%	5.0%	18.1%	23.1%	1.8%
GOP	65.6%	28.2%	93.8%	0.0%	6.2%	6.2%	0.0%
Dem.	45.4%	28.1%	73.5%	14.0%	12.5%	26.5%	0.0%
Ohio	44.7%	33.2%	77.9%	11.7%	10.2%	21.9%	0.2%
GOP	60.7%	18.6%	79.3%	13.0%	7.7%	20.7%	0.0%
Dem.	28.9%	46.2%	75.1%	12.7%	11.8%	24.5%	0.5%
Virginia	46.6%	29.9%	76.5%	12.5%	11.0%	23.5%	0.0%
GOP	61.3%	14.1%	75.4%	14.1%	10.5%	24.6%	0.0%
Dem.	41.2%	33.0%	74.2%	11.7%	14.1%	25.8%	0.0%
California	51.5%	27.2%	78.7%	9.1%	11.5%	20.6%	0.7%
GOP	55.3%	28.3%	83.6%	1.8%	14.7%	16.5%	0.0%

Dem.	47.7%	31.8%	79.5%	9.8%	9.2%	19.0%	1.6%
Maryland	49.2%	33.2%	82.4%	7.8%	8.7%	16.5%	1.1%
GOP	48.6%	41.2%	89.8%	8.4%	1.8%	10.2%	0.0%
Dem.	47.2%	29.2%	76.4%	6.9%	14.7%	21.6%	2.0%
New York	43.1%	36.3%	79.4%	13.1%	7.5%	20.6%	0.0%
GOP	61.1%	10.5%	71.6%	13.9%	14.5%	28.4%	0.0%
Dem.	36.2%	39.9%	76.1%	15.6%	8.3%	23.9%	0.0%

Please evaluate this argument against restricting SNAP eligible foods

Q14. Just because people are poor does not mean the federal government should tell them what to eat. Individuals can make their own decisions about nutrition. Furthermore, administering such rules could be expensive. And, Congress would have to fend off armies of food-industry lobbyists, trying to protect certain foods from being excluded.

Very convincing	Somewhat convincing	Somewhat unconvincing	Very unconvincing
1	2	3	4

	Very convincing	Somewhat convincing	Total convincing	Somewhat unconvincing	Very unconvincing	Total unconvincing	Refused / Don't know
National	14.8%	27.0%	41.8%	23.1%	34.8%	57.9%	0.3%
GOP	7.5%	22.8%	30.3%	22.6%	47.2%	69.8%	0.0%
Dem.	20.7%	30.9%	51.6%	23.5%	24.3%	47.8%	0.7%
Indep.	15.7%	26.2%	41.9%	23.1%	34.8%	57.9%	0.2%
Texas	18.0%	23.3%	41.3%	28.8%	30.0%	58.8%	0.0%
GOP	7.2%	15.2%	22.4%	24.7%	52.9%	77.6%	0.0%
Dem.	22.2%	37.0%	59.2%	31.1%	9.7%	40.8%	0.0%
North Carolina	14.5%	31.1%	45.6%	20.0%	34.4%	54.4%	0.0%
GOP	10.5%	34.0%	44.5%	26.4%	29.1%	55.5%	0.0%
Dem.	25.4%	34.7%	60.1%	18.7%	21.2%	39.9%	0.0%
Florida	14.3%	31.6%	45.9%	15.4%	38.7%	54.1%	0.0%
GOP	8.2%	29.8%	38.0%	14.5%	47.5%	62.0%	0.0%
Dem.	14.1%	30.1%	44.2%	25.1%	30.7%	55.8%	0.0%
Ohio	14.8%	21.6%	36.4%	26.9%	35.7%	62.6%	1.0%
GOP	6.3%	16.7%	23.0%	29.9%	47.1%	77.0%	0.0%
Dem.	24.2%	30.0%	54.2%	19.5%	26.3%	45.8%	0.0%
Virginia	19.1%	23.9%	43.0%	24.9%	32.1%	57.0%	0.0%
GOP	12.7%	19.2%	31.9%	24.4%	43.7%	68.1%	0.0%

Dem.	24.9%	21.5%	46.4%	27.1%	26.5%	53.6%	0.0%
California	12.0%	27.1%	39.1%	25.5%	34.7%	60.2%	0.7%
GOP	5.0%	24.3%	29.3%	17.8%	52.9%	70.7%	0.0%
Dem.	14.9%	28.8%	43.7%	29.6%	25.1%	54.7%	1.6%
Maryland	15.4%	22.5%	37.9%	26.6%	35.5%	62.1%	0.0%
GOP	11.1%	33.1%	44.2%	17.1%	38.7%	55.8%	0.0%
Dem.	20.1%	20.8%	40.9%	24.4%	34.7%	59.1%	0.0%
New York	16.8%	33.7%	50.5%	24.7%	24.8%	49.5%	0.0%
GOP	25.6%	21.1%	46.7%	20.6%	32.7%	53.3%	0.0%
Dem.	17.2%	34.4%	51.6%	26.3%	22.1%	48.4%	0.0%

Q15: Now, please select whether you think SNAP credits (food stamps) should be allowed or not allowed for buying the following items.

15a: Sweetened sodas

	Should be allowed	Should <u>not</u> be allowed	Refused / Don't know
National	25.1%	73.4%	1.5%
GOP	16.6%	82.0%	1.4%
Dem.	31.7%	66.6%	1.8%
Indep.	26.7%	72.3%	1.0%
Texas	28.6%	71.4%	0.0%
GOP	14.5%	85.5%	0.0%
Dem.	40.3%	59.7%	0.0%
North Carolina	34.2%	64.2%	1.7%
GOP	18.0%	77.6%	4.4%
Dem.	49.4%	50.6%	0.0%
Florida	30.1%	67.1%	2.9%
GOP	23.0%	69.2%	7.8%
Dem.	36.2%	63.8%	0.0%
Ohio	27.2%	72.8%	0.0%
GOP	13.2%	86.8%	0.0%
Dem.	43.0%	57.0%	0.0%
Virginia	32.8%	66.0%	1.2%
GOP	26.5%	73.5%	0.0%
Dem.	37.6%	61.2%	1.2%

California	21.4%	76.5%	2.1%
GOP	16.2%	80.9%	2.8%
Dem.	19.8%	77.4%	2.8%
Maryland	23.6%	76.4%	0.0%
GOP	22.8%	77.2%	0.0%
Dem.	25.8%	74.2%	0.0%
New York	26.1%	65.7%	8.2%
GOP	16.0%	76.4%	7.6%
Dem.	30.1%	65.0%	4.9%

15b: Candy

	Should be allowed	Should <u>not</u> be allowed	Refused / Don't know
National	22.7%	75.8%	1.5%
GOP	13.4%	85.4%	1.3%
Dem.	30.3%	67.7%	2.0%
Indep.	23.9%	75.5%	0.7%
Texas	23.9%	76.1%	0.0%
GOP	12.4%	87.6%	0.0%
Dem.	30.2%	69.8%	0.0%
North Carolina	32.2%	66.1%	1.7%
GOP	20.1%	75.5%	4.4%
Dem.	44.0%	56.0%	0.0%
Florida	29.1%	70.9%	0.0%
GOP	15.3%	84.7%	0.0%
Dem.	33.5%	66.5%	0.0%
Ohio	22.6%	75.2%	2.2%
GOP	12.7%	82.2%	5.1%
Dem.	35.0%	64.3%	0.7%
Virginia	30.6%	68.8%	0.6%
GOP	16.9%	83.1%	0.0%
Dem.	39.8%	59.0%	1.2%
California	20.9%	76.6%	2.4%
GOP	13.6%	83.6%	2.8%
Dem.	20.3%	76.1%	3.5%

Maryland	20.6%	79.4%	0.0%
GOP	14.4%	85.6%	0.0%
Dem.	27.1%	72.9%	0.0%

New York	27.7%	65.8%	6.6%
GOP	22.4%	70.1%	7.6%
Dem.	30.6%	64.5%	4.9%

15c: Cookies, cakes and doughnuts

	Should be allowed	Should <u>not</u> be allowed	Refused / Don't know
National	39.7%	58.8%	1.4%
GOP	25.4%	73.1%	1.5%
Dem.	52.1%	46.2%	1.7%
Indep.	39.2%	60.4%	0.4%

Texas	36.4%	62.7%	1.0%
GOP	23.6%	76.4%	0.0%
Dem.	48.8%	48.9%	2.3%

North Carolina	40.4%	57.9%	1.7%
GOP	22.4%	73.2%	4.4%
Dem.	56.3%	43.7%	0.0%

Florida	45.1%	54.4%	0.5%
GOP	40.4%	59.6%	0.0%
Dem.	57.2%	41.5%	1.4%

Ohio	36.9%	62.8%	0.4%
GOP	27.8%	72.2%	0.0%
Dem.	46.7%	52.5%	0.8%

Virginia	48.0%	51.4%	0.6%
GOP	33.6%	66.4%	0.0%
Dem.	60.3%	38.5%	1.2%

California	38.1%	59.8%	2.1%
GOP	21.9%	75.2%	2.8%
Dem.	37.0%	60.2%	2.8%

Maryland	38.1%	60.9%	1.0%
GOP	21.9%	78.1%	0.0%
Dem.	49.5%	48.6%	1.8%

New York	44.7%	51.4%	3.8%
GOP	28.2%	64.2%	7.6%
Dem.	53.2%	46.8%	0.0%

15d: Chips and snack crackers

	Should be allowed	Should <u>not</u> be allowed	Refused / Don't know
National	58.3%	40.0%	1.7%
GOP	46.8%	51.9%	1.4%
Dem.	68.9%	29.0%	2.1%
Indep.	56.3%	42.6%	1.2%
Texas	55.8%	44.2%	0.0%
GOP	36.2%	63.8%	0.0%
Dem.	79.7%	20.3%	0.0%
North Carolina	58.3%	40.0%	1.7%
GOP	43.3%	52.3%	4.4%
Dem.	72.7%	27.3%	0.0%
Florida	59.4%	40.6%	0.0%
GOP	52.8%	47.2%	0.0%
Dem.	62.8%	37.2%	0.0%
Ohio	58.5%	40.3%	1.1%
GOP	41.6%	56.3%	2.1%
Dem.	76.3%	23.0%	0.7%
Virginia	64.6%	32.7%	2.7%
GOP	53.1%	46.9%	0.0%
Dem.	72.5%	24.6%	2.9%
California	57.4%	40.5%	2.1%
GOP	28.2%	68.9%	2.8%
Dem.	63.7%	33.5%	2.8%
Maryland	52.7%	47.3%	0.0%
GOP	48.4%	51.6%	0.0%
Dem.	54.7%	45.3%	0.0%
New York	63.3%	34.8%	1.9%
GOP	46.2%	52.7%	1.2%

Dem.	60.9%	36.1%	3.0%
------	-------	-------	------

15e: Ice cream

	Should be allowed	Should <u>not</u> be allowed	Refused / Don't know
National	55.1%	43.1%	1.8%
GOP	41.7%	55.9%	2.4%
Dem.	66.2%	32.0%	1.8%
Indep.	55.8%	43.8%	0.4%

Texas	47.3%	52.7%	0.0%
GOP	34.6%	65.4%	0.0%
Dem.	52.4%	47.6%	0.0%

North Carolina	54.0%	44.4%	1.7%
GOP	33.8%	61.8%	4.4%
Dem.	73.9%	26.1%	0.0%

Florida	52.5%	47.5%	0.0%
GOP	45.7%	54.3%	0.0%
Dem.	53.9%	46.1%	0.0%

Ohio	51.9%	46.3%	1.8%
GOP	39.1%	60.9%	0.0%
Dem.	61.9%	34.3%	3.8%

Virginia	60.4%	39.0%	0.6%
GOP	47.7%	52.3%	0.0%
Dem.	66.5%	32.3%	1.2%

California	55.1%	42.8%	2.1%
GOP	27.2%	70.0%	2.8%
Dem.	59.5%	37.7%	2.8%

Maryland	52.5%	47.5%	0.0%
GOP	38.7%	61.3%	0.0%
Dem.	66.1%	33.9%	0.0%

New York	71.6%	26.8%	1.5%
GOP	55.7%	43.2%	1.2%
Dem.	79.5%	18.2%	2.3%

Statement: Another idea that has been considered for the SNAP program is to try to encourage people to eat more healthy food like fruits and vegetables. Research shows that if SNAP recipients are given a discount on fruits and

vegetables they are more likely to buy them, as it helps their food stamps go further. On the one hand, these discounts would be an extra cost for the program; on the other hand, they are likely to have positive health effects, which might produce some savings for government spending on healthcare benefits for SNAP beneficiaries, who are also on Medicaid.

Q15F: Do you favor or oppose offering discounts on fruit and vegetables bought using SNAP credits?

Favor	Oppose
1	2

	Favor	Oppose	Don't Know / Refused
National	88.0%	11.6%	0.3%
GOP	81.3%	18.5%	0.2%
Dem.	93.1%	6.4%	0.5%
Indep.	89.9%	10.1%	0.0%
Texas	83.6%	16.4%	0.0%
GOP	78.2%	21.8%	0.0%
Dem.	89.4%	10.6%	0.0%
North Carolina	87.7%	12.3%	0.0%
GOP	77.0%	23.0%	0.0%
Dem.	97.0%	3.0%	0.0%
Florida	87.2%	12.8%	0.0%
GOP	86.2%	13.8%	0.0%
Dem.	86.2%	13.8%	0.0%
Ohio	91.1%	8.9%	0.0%
GOP	77.8%	22.2%	0.0%
Dem.	99.6%	0.4%	0.0%
Virginia	83.4%	16.6%	0.0%
GOP	70.0%	30.0%	0.0%
Dem.	90.4%	9.6%	0.0%
California	86.9%	11.6%	1.6%
GOP	80.8%	16.4%	2.8%
Dem.	91.2%	7.2%	1.6%
Maryland	91.6%	8.4%	0.0%
GOP	90.6%	9.4%	0.0%
Dem.	98.2%	1.8%	0.0%
New York	93.0%	7.0%	0.0%

GOP	78.2%	21.8%	0.0%
Dem.	99.5%	0.5%	0.0%

Q16–Q18 [Withheld for future release]

Medicaid

Q19–Q27 [Previously released: http://vop.org/wp-content/uploads/2017/04/Medicaid_Expansion_Quaire.pdf]

Q28–Q55 [Withheld for future release]